



RUBINIA GIOIELLI

SIZES

# BRACELETS

## Cupido

Our Cupido bracelet is available in four sizes:

SIZE - S the metal wire measures 10,5cm

SIZE - M the metal wire measures 12,5cm

SIZE - L the metal wire measures 15cm

SIZE - XL the metal wire measures 17cm

fitting a wrist between 10 and 13cm

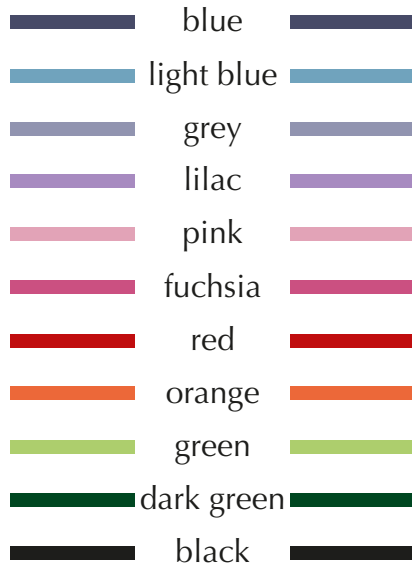
fitting a wrist between 14 and 16cm

fitting a wrist between 17 and 20cm

fitting a wrist between 21 and 24cm

Available closures:

### COTTON STRINGS

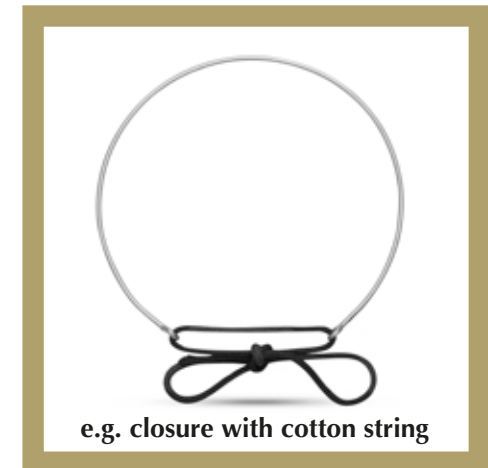


### CHAINS

lengths:

- 3cm

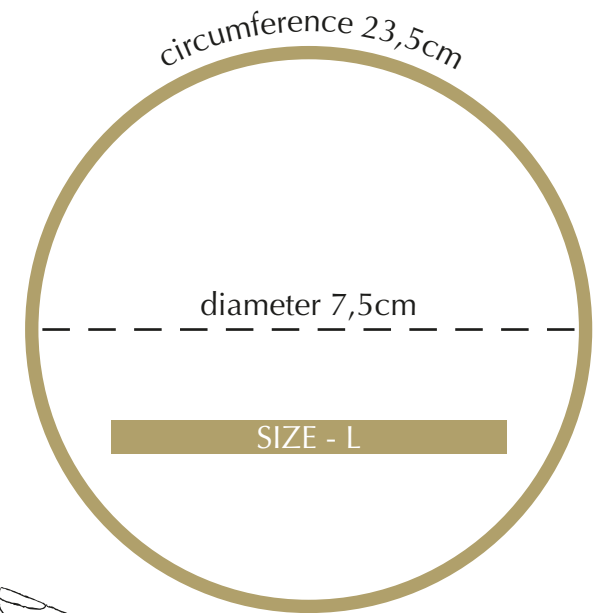
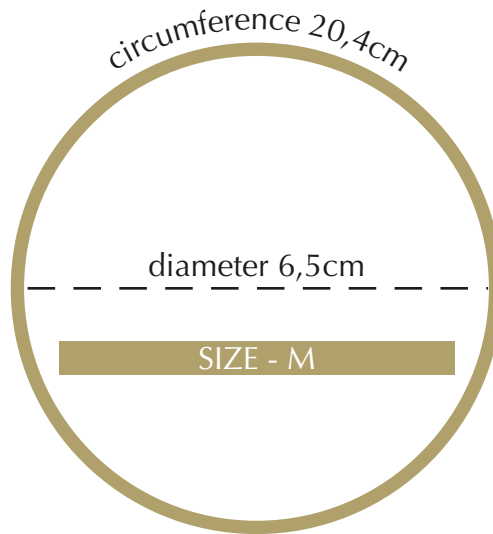
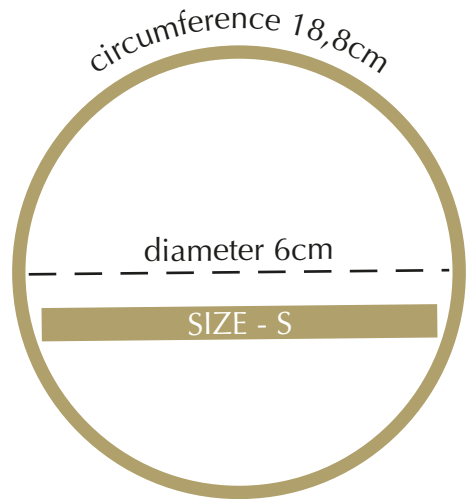
- 5cm



# BRACELETS

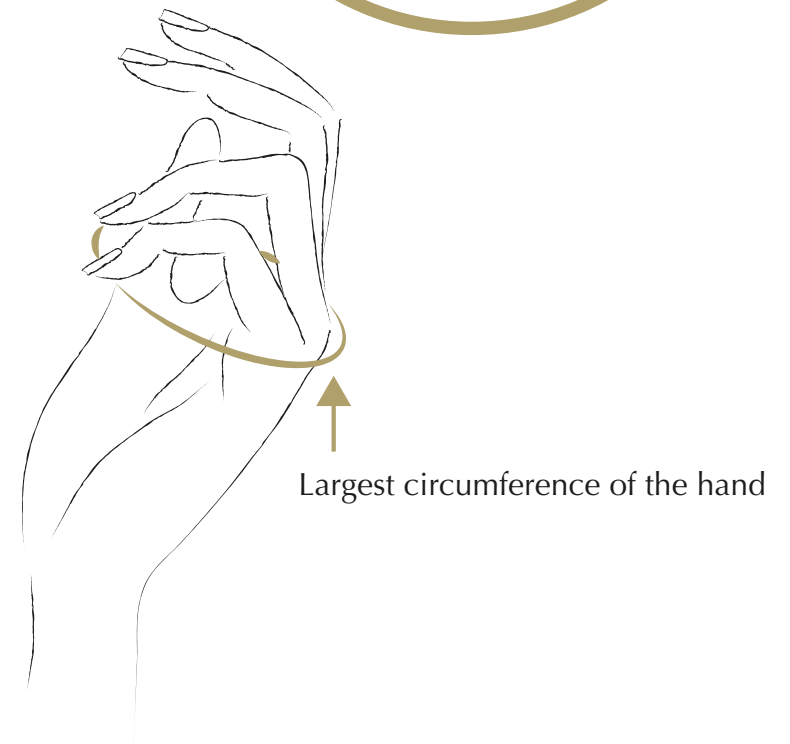
# RIGID

Our rigid bracelets are available in three sizes:



On the picture you can see, how to find out the correct size for you:

Please move the thumb towards the palm and take the length of the circumference around the fingerbones with a measuring tape as illustrated on the right.



# BRACELETS

# LEATHER BRACELETS

- **please make sure that the scale of your printer is set to 100% in printing settings,** then print this document
- please put a measuring tape on the stroke and read your size

Available colours:

- black 
- military green 
- violet 
- red 
- pink 
- cream 
- mustard 
- light blue 
- blue 

SMALL



17,5cm

MEDIUM



19,5cm

LARGE



21cm

EXTRA LARGE

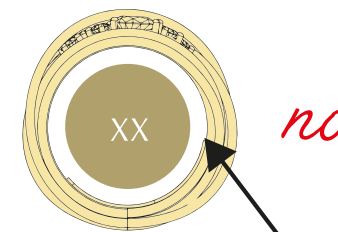
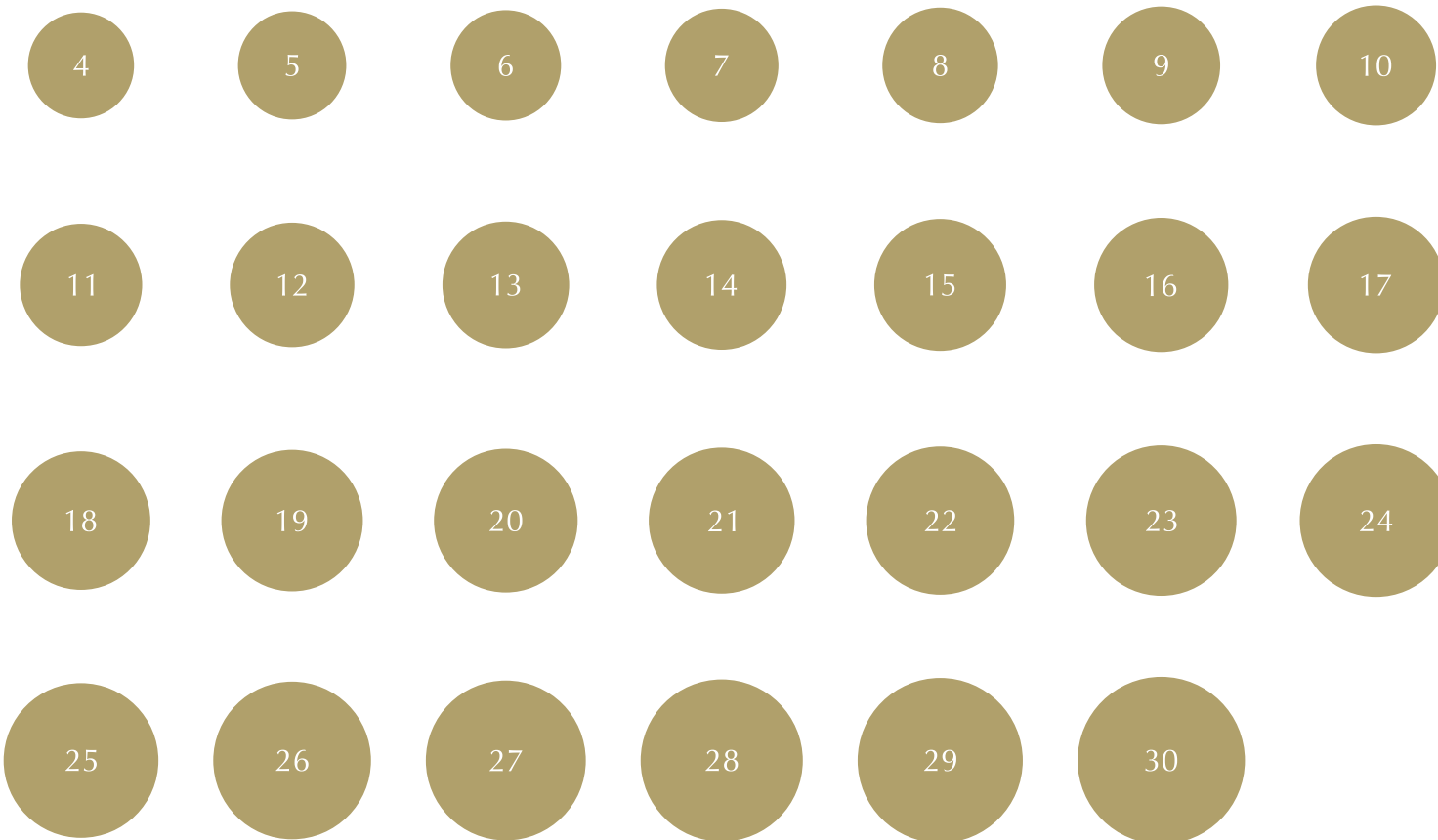


23cm

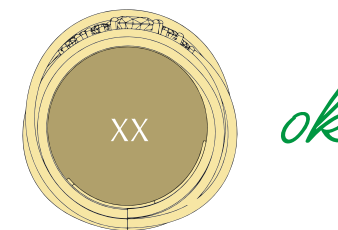
# RINGS

# FIND YOUR RINGSIZE

- **please make sure that the scale of your printer is set to 100% in printing settings,** then print this document
- please place one your ring on the different circles
- when the circumference of your ring covers exactly the circumference of the circle you have found your size



**This is not your size,** as a white space between the circumference of your ring and the circle can be seen.



**This is your size,** as the circumference of your ring fits exactly the circle.

The sizes are expressed in Italian sizes and are shown inside each circle.

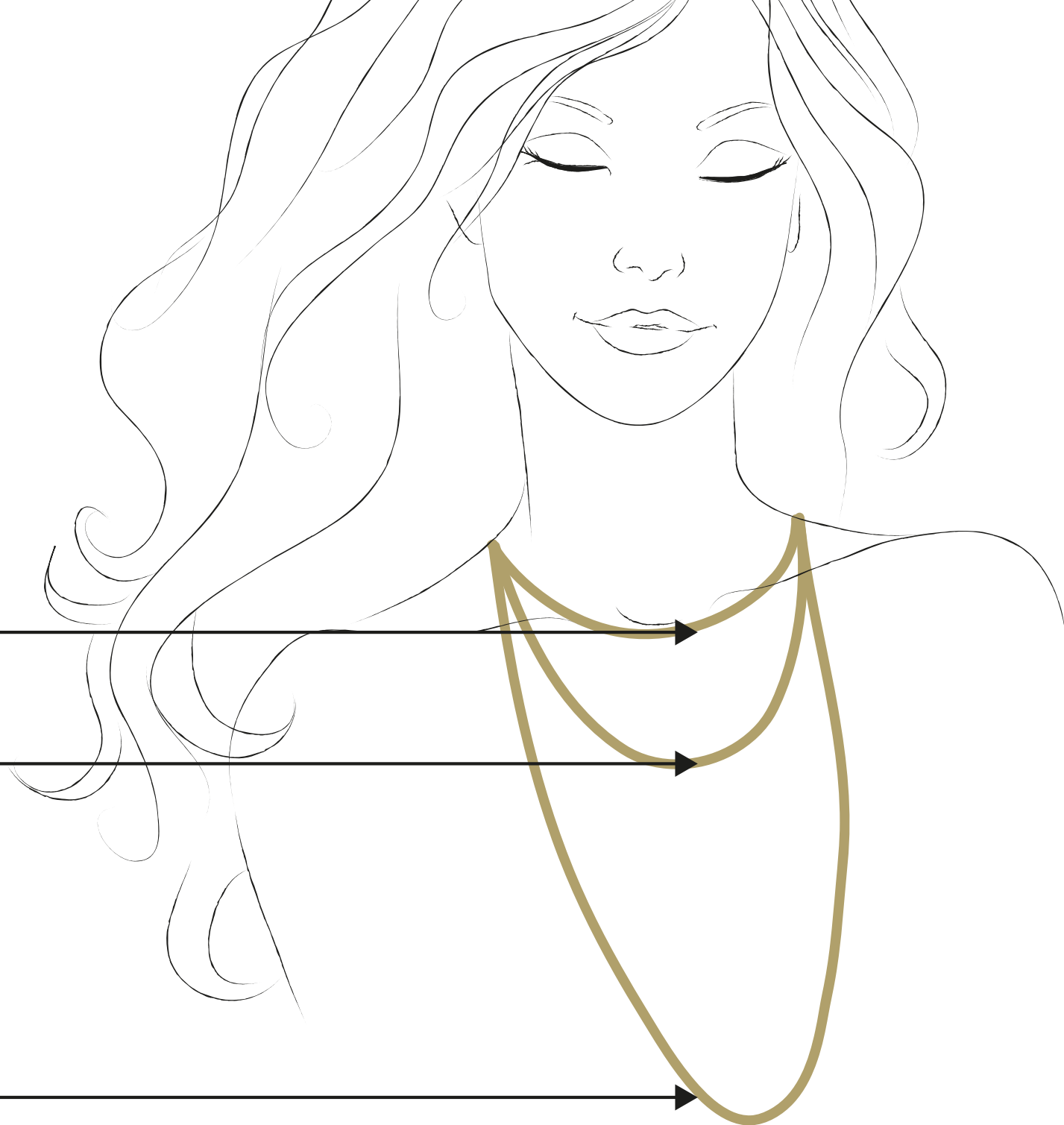
# CHAINS

Our chains are available in three lengths:

38/45cm

60cm

90cm



# C O N T A C T S

ph. +39 342 733 5007

[www.rubinia.com](http://www.rubinia.com)